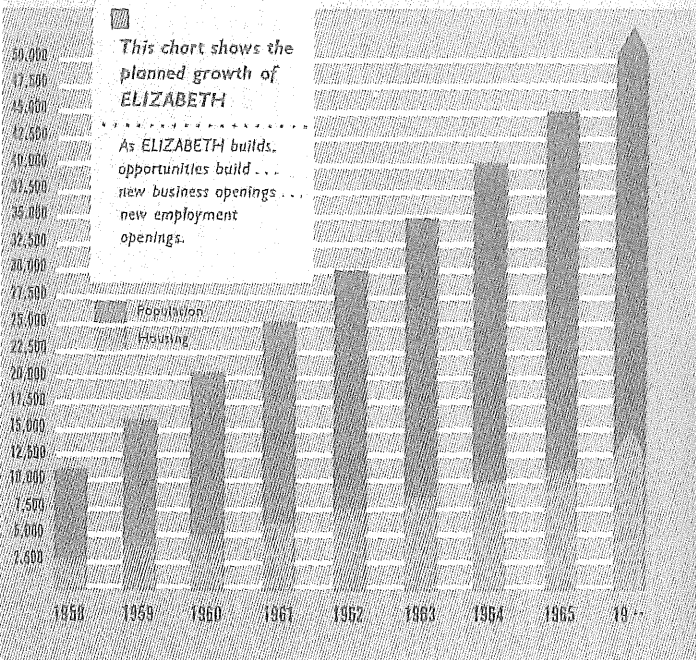


Mark Peel, Good Times, Hard Times: The past and the future in Elizabeth, Melbourne UP, 1995.

BUILD YOUR FUTURE IN **ELIZABETH**

a prosperous, progressive City in a rapidly
expanding State . . . South Australia

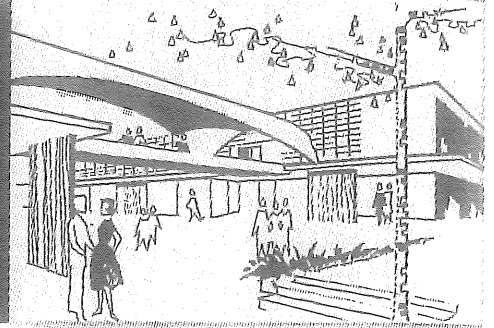
***BUILD** a profitable Industrial future
BUILD a prosperous commercial
or professional future
BUILD a full family life in **ELIZABETH**
a rapidly expanding community, building
a future for itself and its citizens*



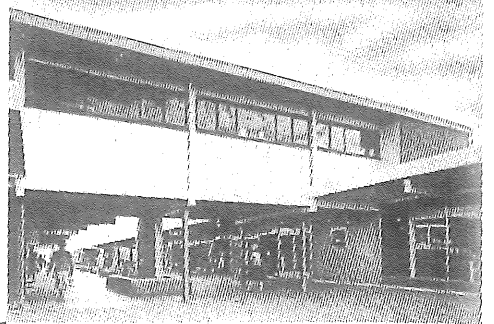
Typical of ELIZABETH'S fully planned community services is the up-to-the-minute Lyell McEwin Hospital, completely equipped to play its part in the City's life



Commercial, professional and cultural centre of the City is the developing Town Centre of ELIZABETH



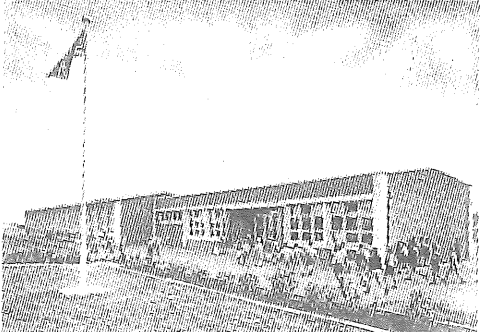
Traffic-free, contemporary styled neighbourhood shopping centres make the housewife's daily shopping round quick, safe and easy



Churches of every denomination are established in ELIZABETH, providing its citizens with every opportunity for the full expression of community life



Schools at both primary and secondary levels assure a full education in pleasant, healthy, roomy conditions for each rising generation



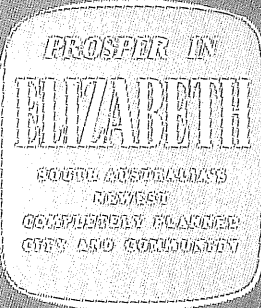
FOR FURTHER INFORMATION ON ELIZABETH CONTACT ANY OF THE FOLLOWING ADDRESSES:

ADELAIDE :
SOUTH AUSTRALIAN HOUSING TRUST
17 Angas Street, Adelaide

ELIZABETH :
INFORMATION CENTRE

UNITED KINGDOM :
AGENT GENERAL FOR SOUTH AUSTRALIA
South Australia House, 50 Strand
LONDON, W.C.2

**INDUSTRIALISTS . . . BUSINESS MEN . . .
FAMILY MEN . . .**



ELIZABETH OFFERS THE OPPORTUNITY OF BUILDING A SOLID FUTURE IN A PLANNED, FAST-GROWING COMMUNITY IN A STATE NOTED FOR ITS INDUSTRIAL STABILITY.

THE INDUSTRIALIST WILL FIND . . .

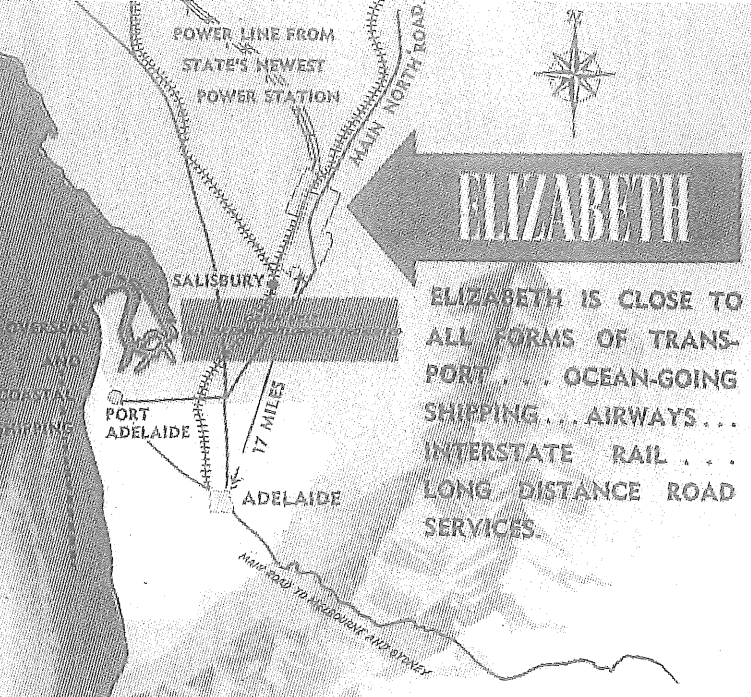
Desirable, convenient factory sites with transport services and facilities of the highest order in an area planned for these purposes. A full range of houses can be made available for key personnel and the labour supply is assured by the extent of the population for which the City is planned.

THE BUSINESS MAN WILL FIND . . .

Ample opportunity for business expansion in a rapidly growing community. The housing is of a style and character attracting the best type of citizen, the very best prospects for your services. Shopping centres in contemporary design, incorporating ample parking areas, and complete with shop premises to suit all requirements, are favourably placed in each neighbourhood of this attractive community.

THE FAMILY MAN WILL FIND . . .

Well designed homes, surrounded by ample grounds for attractive gardens. Opportunity to bring up a family in the best possible surroundings. Modern primary schools are located to minimise the danger from main traffic arteries. Shopping will be convenient in any neighbourhood. Churches, community centres, recreational and entertainment facilities are built and planned in plenty. ELIZABETH is designed for gracious, comfortable living and, being a new City, it has equal opportunities for all to take their place in community life.



ELIZABETH IS CLOSE TO ALL FORMS OF TRANSPORT . . . OCEAN-GOING SHIPPING . . . AIRWAYS . . . INTERSTATE RAIL . . . LONG DISTANCE ROAD SERVICES.

South Australia has an enviable record of development and the lowest industrial dispute rate of any State in Australia. The industrial climate is one of assured progress and prosperity for employee and employer alike. The physical climate is kindly and delightful with cheerful sunshine and mild, dry weather for many months of the year.

